

LED WELLGLASS LIGHTING FIXTURES

EVde-PR../LED Series – Copper-free aluminium



- Explosion-proof wellglass lighting fixture made in copper-free aluminium and tempered glass; provided with AISI304 or AISI316L stainless steel hardware and screws;
- LED lifetime-saving technology and overvoltage protection system;
- High resistance to corrosion and designed for the harshest temperatures.

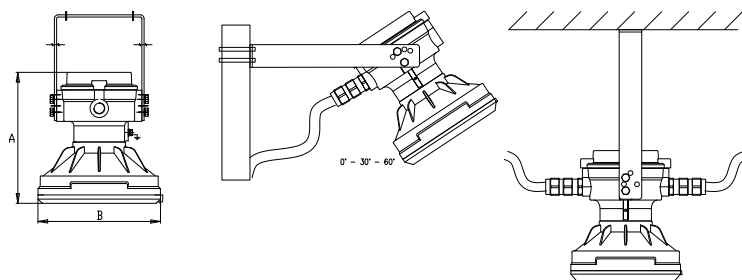
MARKING

II 2 G Ex db eb IIC T6/T5/T4 Gb
II 2 D Ex tb IIIC T85/T100/T135°C Db

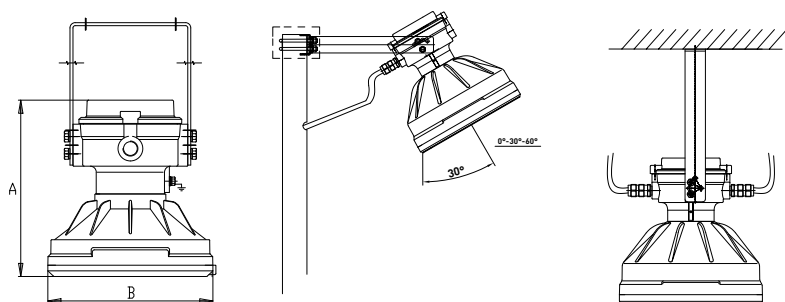
TECHNICAL FEATURES

Material	Copper-free aluminium and tempered glass
IP rating	IP66
Ambient temperature range	-60°C to +60°C (Operating at -60°C, provided that the luminaire is switched on above +40°C)
Approvals	ATEX: INERIS 01ATEX0019X - IECEx: INE 15.0031X EAC: KG417-039.IT.02.06788 – ECAS available
Zones	Gas Zone: 1, 2 Dust Zone: 21, 22
Rated voltage	220-240 VAC (+-10%)
Frequency	50-60 Hz
Colour rendering index	70 CRI
Colour temperature	5.700 K 4.000 K upon request
Power factor	cos φ ≥ 0,98
Surge protection	8 kV
Driver	Integrated - Equipped with thermal guard protection to prevent overtemperature
LED Lifetime (L70) Ta+25°C	> 66.000 h - according to IES LM-80-08
Hardware and screws	AISI316L stainless steel
Coating	Painted by polyuretane painting: RAL5014 painting cycle C4 suitable for On-Shore The reference standard is UNI EN ISO 12944 - 1: 2018 Upon request other colours and painting cycles
Entries	N° 2 entries M25 Upon request M20, 3/4" and 1/2" NPT
Through wiring	Loop-in/Loop-out
Plug	1 x plastic dustproof plug for M25 entry protection 1 x M25 brass nickel chrome plated plug c/w gasket (mounted)
Accessories upon request	Mounting kit in AISI316L stainless steel: Pole mounting kit, from 1 1/2" up to 2" Cable gland kit in brass nickel chrome or AISI316L stainless steel Protection guard in AISI316L stainless steel Mounting plate for internal lighting tank inspection

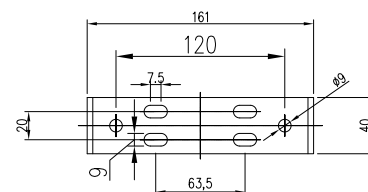
Dimensions – EVde-PR4/LED L6K



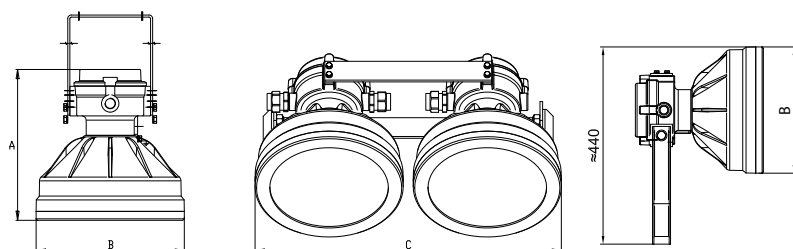
Dimensions – EVde-PR5/LED L11K



Mounting bracket fixing detail



Dimensions – EVde-PR5/LED L22K



EVde-PR../LED – Wellglass lighting fixtures

CODE	TYPE	POWER [W]	LUMEN [lm]	LUM. EFF [lm/W]	DIMENSION [mm]			WEIGHT [kg]
					A	B	C	
A030464510005	EVDE-PR4/LED-B45	45	7.950	135	231	194	-	5,00
A030568410005	EVDE-PR5/LED-B100	84	11.000	131	290	280	-	10,50
A03X000027001	EVDE-PR5/LED-B100	84X2	22.000	131	290	280	581	27,00
A030464510003	EVDE-PR4/LED-B45 LE-P 180	45	7.950	135	490	220	-	8,00
	EMERGENCY SERVICE: 180°		1.300					
A030568410010	EVDE-PR5/LED-B100 LE-P 180	84	11.000	131	540	280	-	13,50
	EMERGENCY SERVICE: 180°		1.300					

*4.000 K upon request

Pole mounting kit

CODE	TYPE
A601103010001	P4 KIT - 1" 1/2 POLE MOUNTING KIT
A601103010002	P5 KIT - 2" POLE MOUNTING KIT

Photometric light curves

